
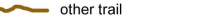

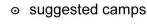

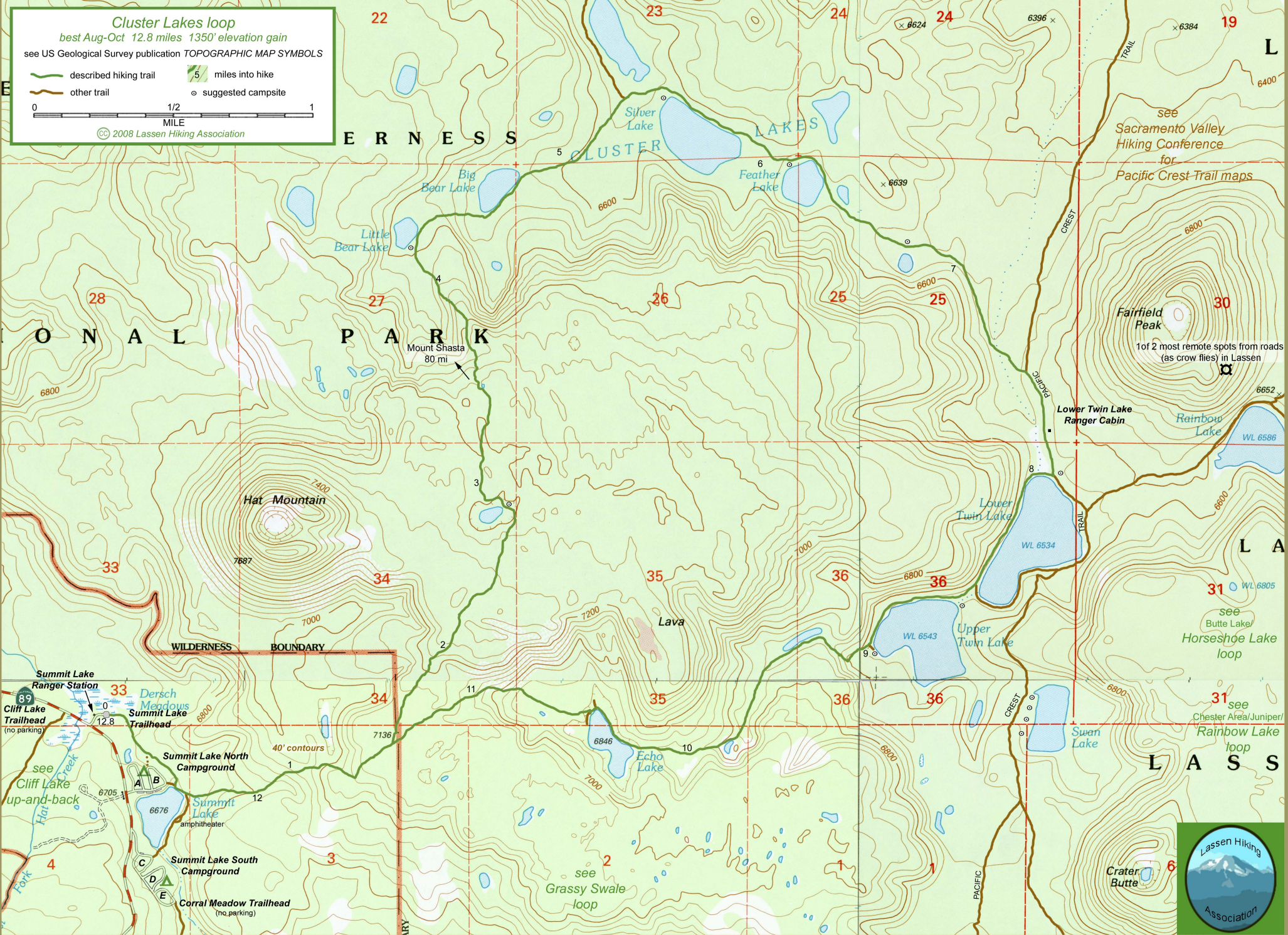


Cluster Lakes loop
 best Aug-Oct 12.8 miles 1350' elevation gain
 see US Geological Survey publication TOPOGRAPHIC MAP SYMBOLS

 described hiking trail
 other trail
 5 miles into hike
 suggested campsite


 0 1/2 1
 MILE
 © 2008 Lassen Hiking Association



see Sacramento Valley Hiking Conference for Pacific Crest-Trail maps

Fairfield Peak
 1 of 2 most remote spots from roads (as crow flies) in Lassen

Lower Twin Lake Ranger Cabin

see Butte Lake/Horseshoe Lake loop

see Chester Area/Juniper/Rainbow Lake loop

see Grassy Swale loop

Summit Lake Ranger Station
 Cliff Lake Trailhead (no parking)
 see Cliff Lake up-and-back

Summit Lake North Campground

Summit Lake amphitheater

Summit Lake South Campground

Corral Meadow Trailhead (no parking)

