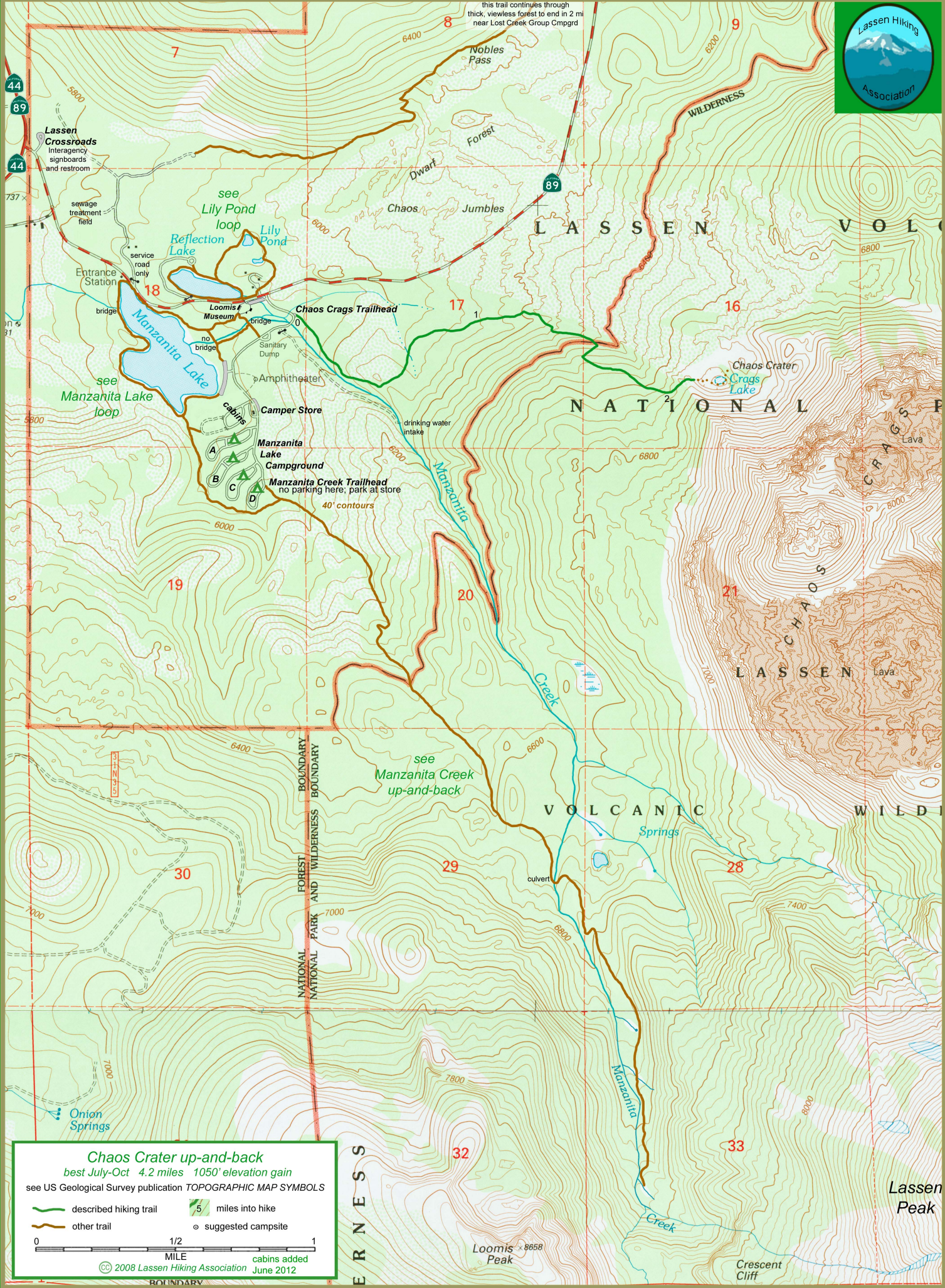




this trail continues through thick, viewless forest to end in 2 mi near Lost Creek Group Campgrd



Lassen Crossroads Interagency signboards and restroom

see Lily Pond loop
Reflection Lake
Lily Pond

Entrance Station
bridge

Loomis Museum
no bridge

Chaos Crags Trailhead

Sanitary Dump
Amphitheater

Camper Store
Manzanita Lake Campground
cabins A B C D

Manzanita Creek Trailhead
no parking here; park at store
40' contours

drinking water intake

L A S S E N N A T I O N A L V O L C A N I C W I L D E R N E S S

Chaos Crags Lake

Chaos Crags Lava

L A S S E N C H A O S L A V A

V O L C A N I C W I L D E R N E S S

see Manzanita Creek up-and-back

Springs

Onion Springs

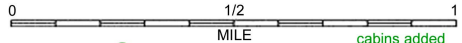
Lassen Peak
Crescent Cliff

Chaos Crater up-and-back

best July-Oct 4.2 miles 1050' elevation gain

see US Geological Survey publication TOPOGRAPHIC MAP SYMBOLS

- described hiking trail
- other trail
- 5 miles into hike
- suggested campsite



© 2008 Lassen Hiking Association June 2012

BOUNDARY

E R N E S S